



Dongguan Zhiding Electronics Technology Co., LTD

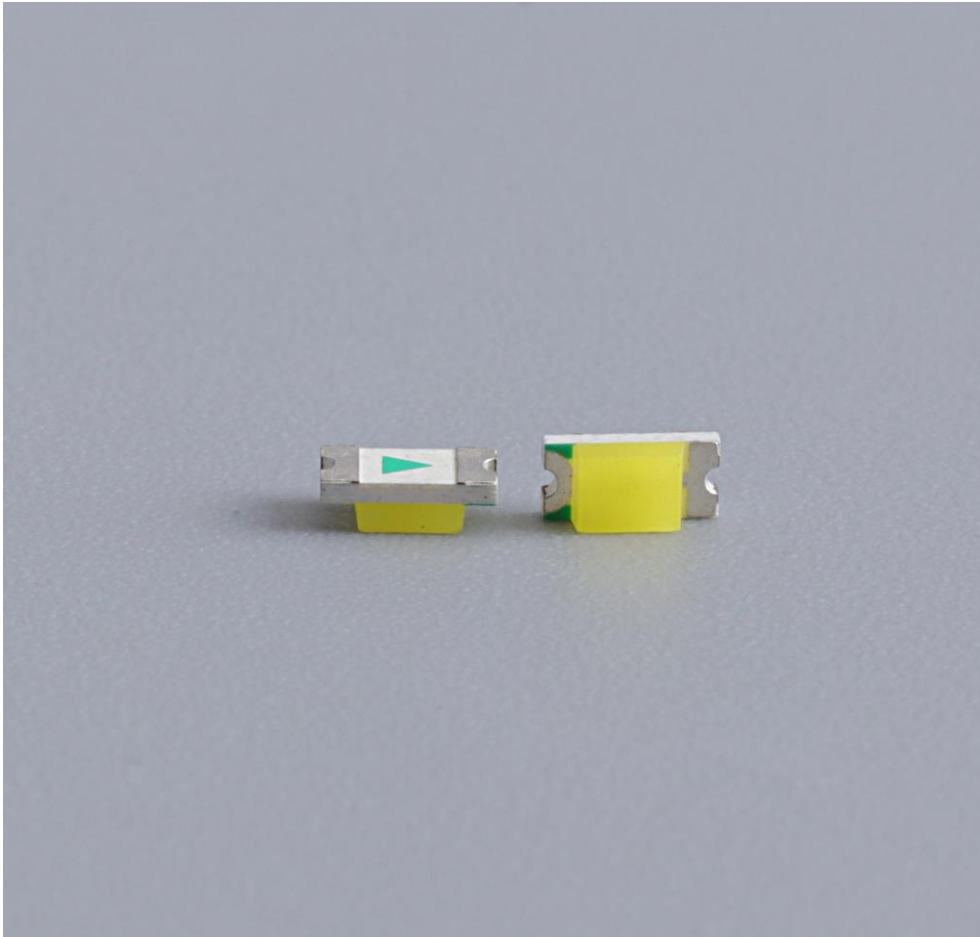
No. 8, Yinling Industry Zone, Xiqiao, Dongcheng District,

Dongguan, Guangdong, China

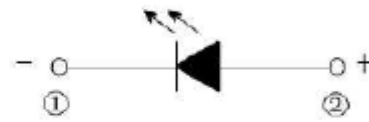
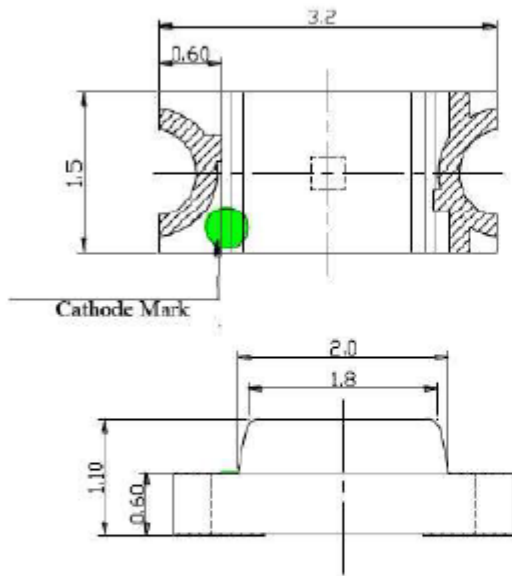
Tel:86-0769-22665151 Fax:86-0769-22665155 Contact: Elsa Xiao Email: sales@zhidingled.com

low current smd led 1206

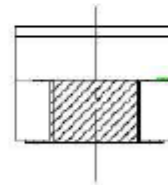
These "flat top" international 1206 size LEDs are suitable for all automatic placement equipment. They are suitable for use with a lexan or membrane panel.



Package Dimensions



Polarity



Unit: (mm)

Tolerance: ± 0.1 mm

Part Number	Emitted Color	WD(nm)/ CCT. (K)	Lens Color	Vf (V) IF=@20mA		Iv (mcd) IF=@20mA		Viewing Angle
				Min	Max	Min	Typ	
AL-S1206DRC-L011-M	Deep Red	640	Water Clear	1.8	2.4	40	50	120
AL-S1206SRC-L011-M	Red	625		1.8	2.4	60	120	120
AL-S1206SRC-LP11-FM	Red	625		1.8	2.4	300	600	120
AL-S1206SOC-L011-M	Orange	605		1.8	2.4	60	120	120
AL-S1206SOC-LP11-FM	Orange	605		1.8	2.4	300	600	120
AL-S1206VGC-L011-M	Yellow Green	570		1.8	2.4	20	40	120
AL-S1206UYC-L011-M	Yellow	590		1.8	2.4	60	120	120
AL-S1206UYC-LP11-FM	Yellow	590		1.8	2.4	300	600	120
AL-S1206TGC-LP11-M	True Green	525		2.8	3.6	300	600	120
AL-S1206UBC-L011-M	Blue	470		2.8	3.6	60	120	120
AL-S1206UBC-LP11-M	Blue	465		2.8	3.6	200	300	120
AL-S1206CWY-LP11-M	Cool White	X:0.28 Y:0.29	Yellow Diff.	2.8	3.6	600	1200	120
AL-S1206NWX-LP11-M	Neutral White	6000		2.8	3.6	600	1200	120
AL-S1206WW0-LP11-M	Warm White	3000	Orange Diff.	2.8	3.6	600	1200	120

Temperature range: -25C to +80C

Viewing angle: 120 degrees

Forward current: 20mA

Typical Features

High efficiency, low power consumption

Long life solid state reliability

Industry standard 1206 size

SMD 1206 LED Features

Package in 8mm tape on 7" diameter reel.

Compatible with automatic placement equipment.

Compatible with infrared and vapor phase reflow solder process.

Mono-color type.

Pb-free.

The product itself will remain within RoHS complaint version.

Descriptions

The 0402 SMD LED is much smaller than lead frame type components, thus enable smaller

board size, higher packing density, reduced storage space and finally smaller equipment to be obtained.

Besides, lightweight makes them ideal for miniature applications etc.

Usage Notes:

Surge will damage the LED

When using LED, it must use a protective resistor in series with DC current about 20mA

Applications

Automotive: backlighting in dashboard and switch

Telecommunication: indicator and backlighting in telephone and fax

Flat backlight for LCD, switch and symbol

General use

Device Selection Guide

LED Part No. Chip Lens Color

Material Emitted Color

Absolute Maximum Rating (Ta=25C)

Parameter Symbol Absolute Maximum Rating Unit

Peak Forward Current

(Duty 1/10 @1kHz) IFP 70 mA

Forward Current IFM 25 mA

Reverse Voltage VR 5 V

Power Dissipation PD 130 mW

Operating Temperature Topr -40~+80C

Storage Temperature Tstg -40~+100C

Soldering Temperature Tsol Reflow Soldering : 260C for 10 sec.

Hand Soldering : 350C for 3 sec.

Note:

1. Luminous intensity is measured with a light sensor and filter combination that approximates the CIE eye-response curve.

2. $\theta_{1/2}$ is the off-axis angle at which the luminous intensity is half the axial luminous intensity.

Can I trust the picture posted? How to send the inquiry and order to you?

All the photos are 100% original taken by our photographers.

Colors may be differed due to variations between the computer monitors setting and naked eyes color difference.

We are welcome to receive your inquiry, you can send inquiry or Skype message to us on the web.Or, send email to us. We are 24 hours online to service you.

WELCOME TO CONTACT US>>>>WWW.ZHIDINGLED.COM



Oversea Sales Manager
Elsa Xiao
E-mail:sales@zhidingled.com
Skype: elsa.xiao0418
Mobile: 86-13412570091
WhatsApp: 86-13412570091
Tel: 86-769-22665151
Fax:86-769-22665155